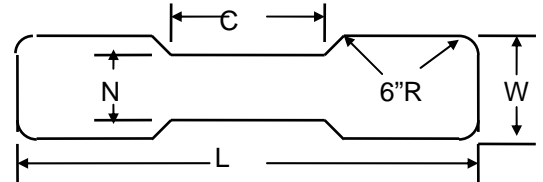


BAKER INDUSTRIES NORTHWEST

Phone (425) 212-3169 • FAX (425) 353-6788 • e-mail: ben@bakerindnw.com
www.bakerindustriesnorthwest.com

ISLAND FORMS

MODELS 550 and 555
 "TAPERED WAIST" STYLES



4 ft. WIDE "W"

| LENGTH "L" | Model 550 (9" tall) | | Model 555 (13" tall) | |
|---------------|---------------------|------|----------------------|------|
| | \$ | lbs. | | lbs. |
| 7 ft. | | 114 | | 147 |
| 8 ft. | | 119 | | 157 |
| 9 ft. | | 127 | | 167 |
| 10 ft. | | 134 | | 177 |
| 11 ft. | | 143 | | 191 |
| 12 ft. | | 152 | | 203 |
| 13 ft. | | 159 | | 212 |
| 14 ft. | | 167 | | 223 |
| 15 ft. | | 176 | | 235 |
| 16 ft. | | 186 | | 249 |
| 17 ft. | | 195 | | 260 |
| 18 ft. | | 204 | | 272 |

N: 30" or 24" standard.
 (other: please specify.)

C: * 48" or 30" or 24"
 standard.
 (other: please specify)

* Available at standard price on Islands 10ft. long and longer.

- Standard Island Forms are with symmetrical ends. If asymmetrical ends needed please inquire on price.

- Half circle ends priced same as 6" radius corner ends.

- Special sizes available and quoted on request.

- Stainless steel quoted on request.

To order please specify:

example:
 550 - 12 - 30 - 48
 Model No. "L" Length (ft.) "N" Waist Width (in.) "C" Waist Length (in.)

- Please see Terms & Conditions page 9.

