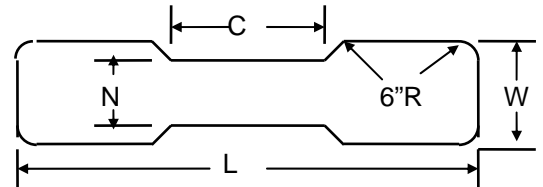


# BAKER INDUSTRIES NORTHWEST

Phone (425) 212-3169 • FAX (425) 353-6788 • e-mail: [ben@bakerindnw.com](mailto:ben@bakerindnw.com)  
[www.bakerindustriesnorthwest.com](http://www.bakerindustriesnorthwest.com)

## ISLAND FORMS

MODELS 550 and 555  
 "TAPERED WAIST" STYLES



4 ft. WIDE "W"

LENGTH "L"	Model 550 (9" tall)		Model 555 (13" tall)	
	Price	Weight	Price	Weight
7 ft.	\$000.00	114 lbs.	\$000.00	147 lbs.
8 ft.	000.00	119	000.00	157
9 ft.	000.00	127	000.00	167
10 ft.	000.00	134	000.00	177
11 ft.	000.00	143	000.00	191
12 ft.	000.00	152	000.00	203
13. ft.	000.00	159	000.00	212
14 ft.	000.00	167	000.00	223
15 ft.	000.00	176	000.00	235
16 ft.	000.00	186	000.00	249
17 ft.	000.00	195	000.00	260
18 ft.	000.00	204	000.00	272

**N:** 30" or 24" standard.  
 (other: please specify.)

**C:** 30" or 24" standard.

(other: please specify)

\* 48" and 42" available at  
 standard price on Islands  
 10ft. long and longer.

- Standard Island Forms are with symmetrical ends. If asymmetrical ends needed please inquire on price.

- Half circle ends priced same as 6" radius corner ends.

- Special sizes available and quoted on request.

- S/S and Galvanized quoted on request.

To order please specify:

example:

550 - 12 - 30 - 48RR  
 Model No.      "L" Length (ft.)      "N" Waist Width (in.)      "C" Waist & Radius Length (in.)

